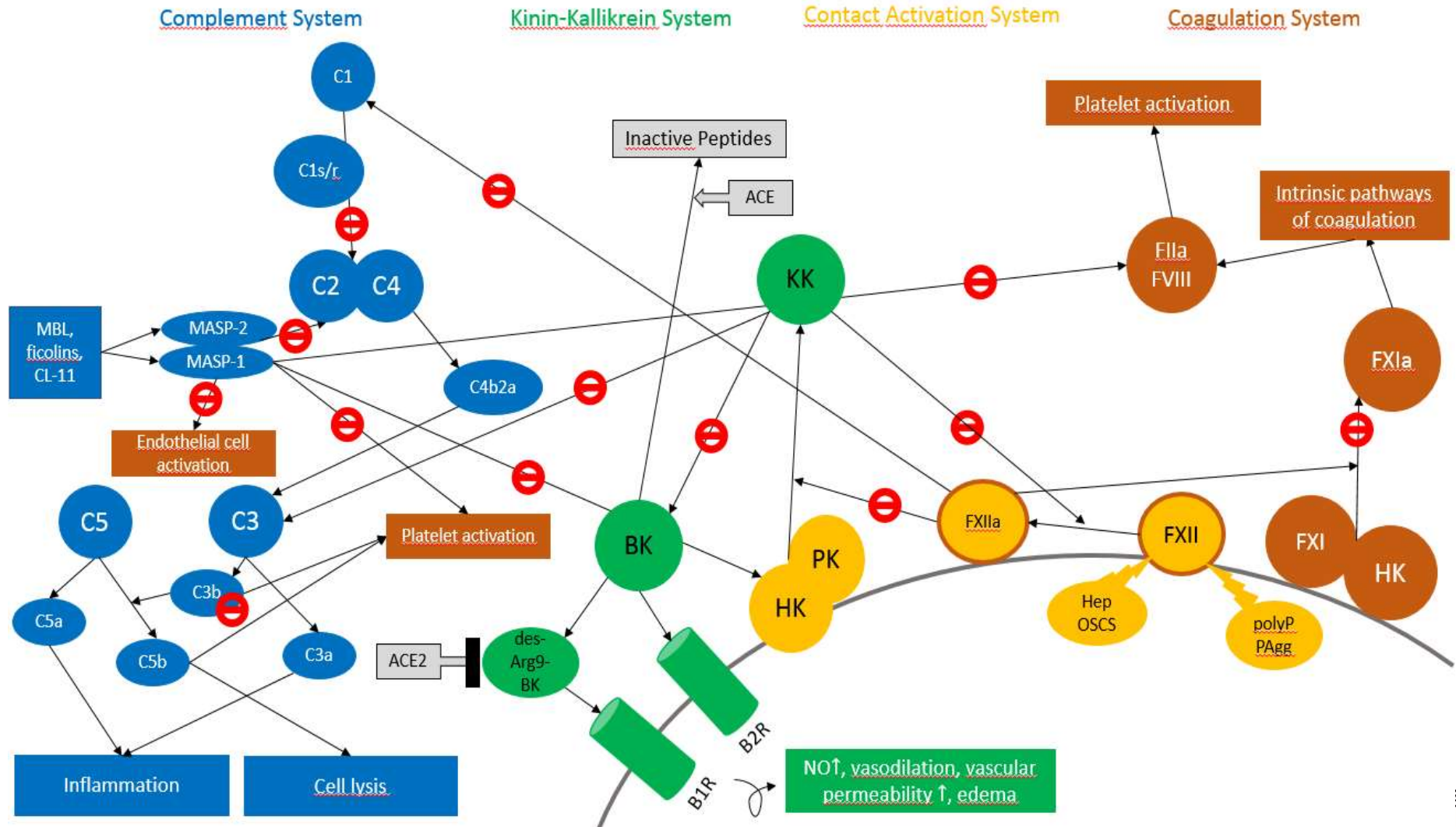


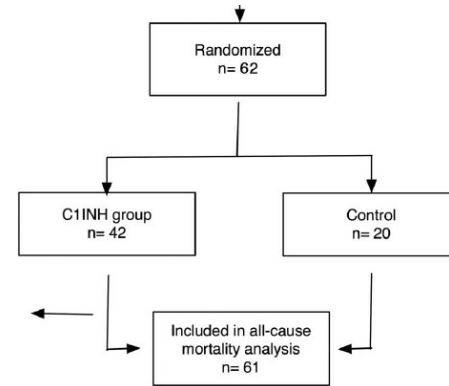
# C1INH and inflammation



# C1INH in sepsis

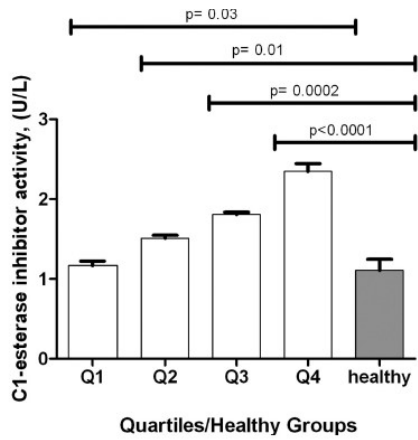
C1-inhibitor in patients with severe sepsis and septic shock: Beneficial effect on renal dysfunction

Christoph Caliezi, MD; Sacha Zeerleder, MD; Maurice Redondo, MD; Bruno Regli, MD; Hans-Ulrich Rothen, MD, PhD; Regula Zürcher-Zenkhusen, MD; Robert Rieben, PhD; Jan Devay, PhD; C. Erik Hack, MD; Bernhard Lämmle, MD; Walter A. Wuillemin, MD, PhD

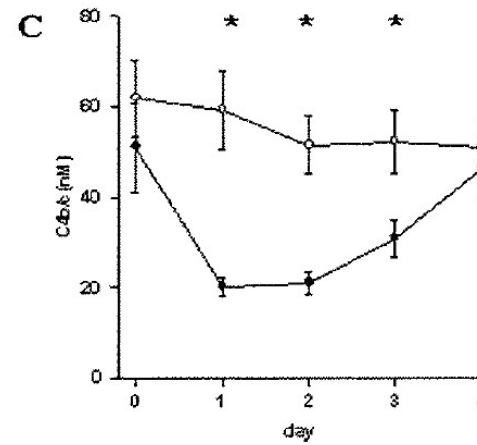


C1-esterase inhibitor infusion increases survival rates for patients with sepsis\*

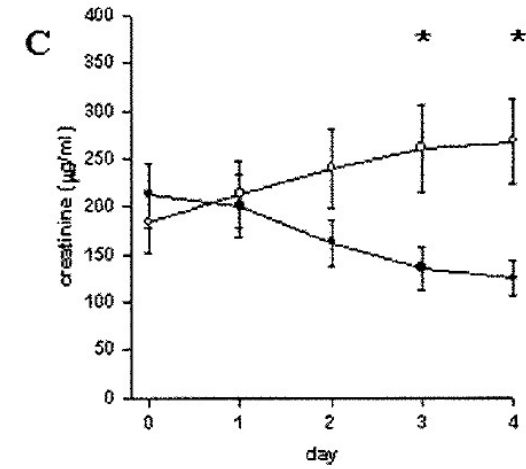
Anton A. Igonin, MD, PhD; Denis N. Protsenko, MD, PhD; Gennadiy M. Galstyan, MD, PhD; Alexey V. Vlasenko, MD, PhD; Nana N. Khachatryan, MD, PhD; Igor V. Nekhaev, MD, PhD; Sergey A. Shlyapnikov, MD, PhD; Natalya B. Lazareva, MD, PhD; Paul Herscu, ND, MPH



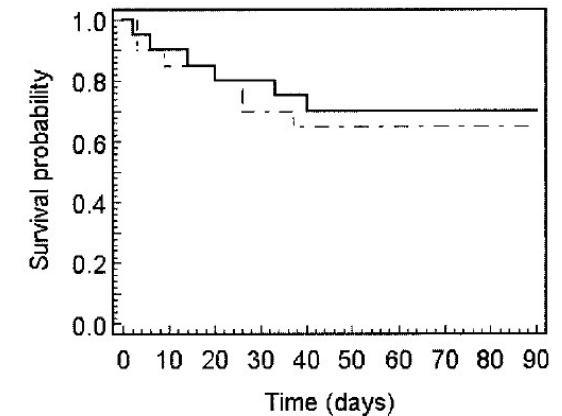
## Complement activation



## Renal function



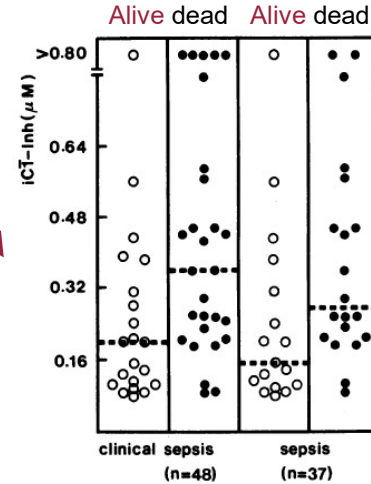
## Mortality



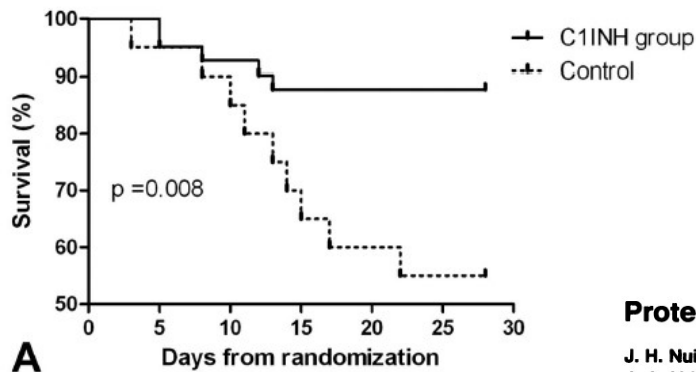
Igonin A, Crit Care Med 2012  
 Caliezi C, Crit Care Med 2002  
 Nuijens JH, J Clin Invest 1989

## Proteolytic Inactivation of Plasma C1 Inhibitor in Sepsis

J. H. Nuijens, A. J. M. Eerenberg-Belmer, C. C. M. Huijbrechts, W. O. Schreuder,\* R. J. F. Felt-Bersma,\* J. J. Abbink, L. G. Thijs,\* and C. E. Hack

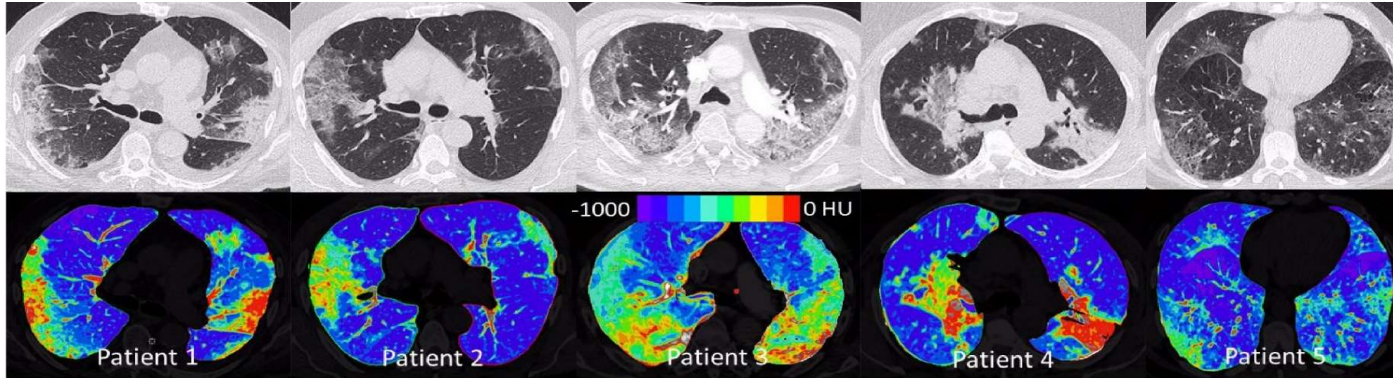


## Mortality



A

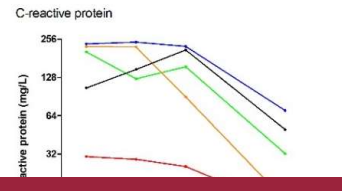
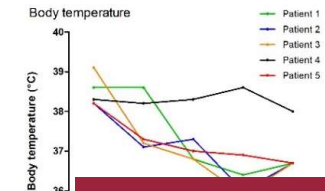
# Rationale: early experience



## Conestat alfa in 5 COVID-19 patients:

- Well tolerated
- Favorable results compared to a matched control cohort (n=15)
- Intubation or death 1/5 (20%) vs. 8/15 (53%) in the control cohort

B



C

