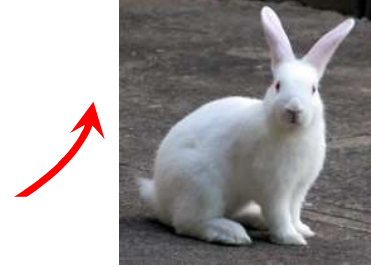


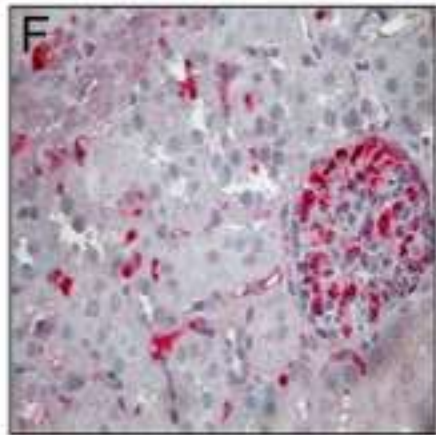
Conestat alfa (recombinant human C1INH)

- Human plasma protein – *multiple-action-multiple-target inhibitor*
- Approved for hereditary angioedema
- Plasma-derived or recombinant version (rhC1INH)

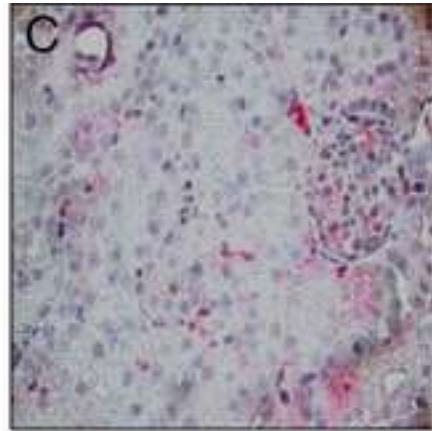


Ameliorates experimental ischemia/reperfusion injury

Renal complement deposition

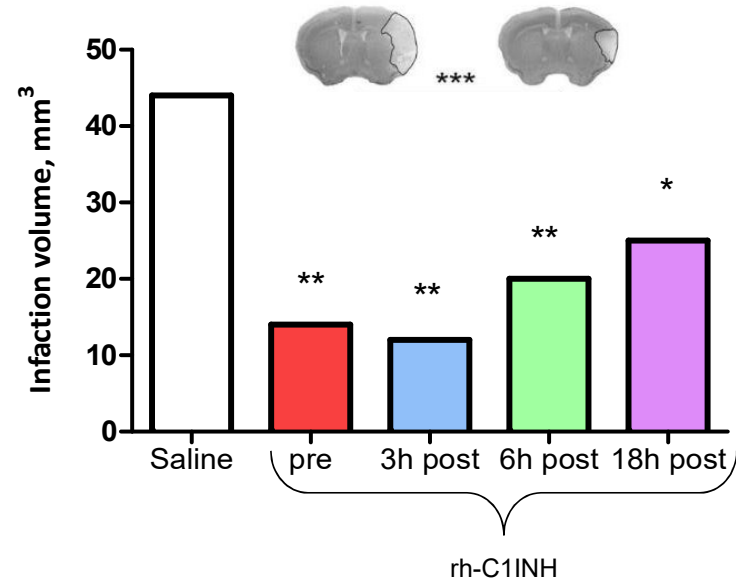


Saline



rhC1INH

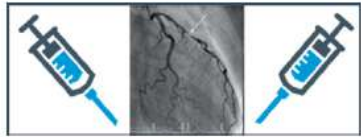
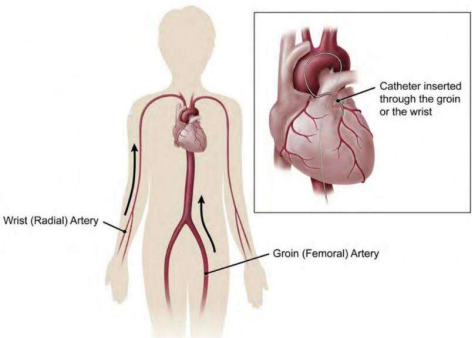
Ischemic stroke volume



30.06.2021

10

The PROTECT study – a pilot trial



PROTECT: rhC1INH and contrast-associated acute renal injury after elective coronary angiography in patients with an eGFR ≤ 50 ml/min



rhC1INH (n = 38)

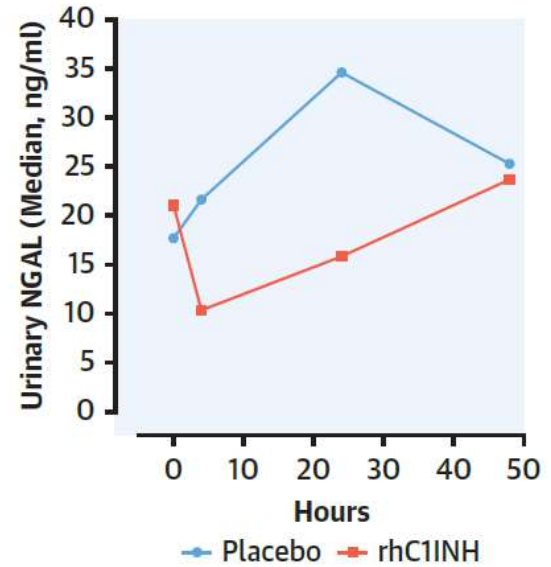
- ≤ 84 kg: 50 U/kg
- > 84 kg: 4,200 U

16%

Placebo (n = 39)

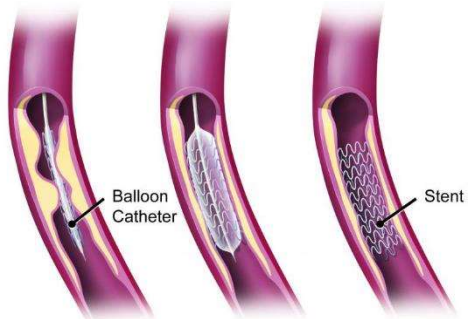
- Sodium chloride 0.9%

33%



21%

21%



Panagiotou, A. et al. J Am Coll Cardiol Intv. 2020;13(7):833-42.

02

COVID-19

