

Wo 26 nov 2014

PHARMING GROUP 26/11/2014 17:39 CET

PHARM €0,378 CLOSED

Since Previous Close -0,005 (-1,31%)

Since Open -0,008 (-2,07%)

Volume 3.796.518 [17:39]

Previous Close €0,383 [25/11/2014]

Open €0,386

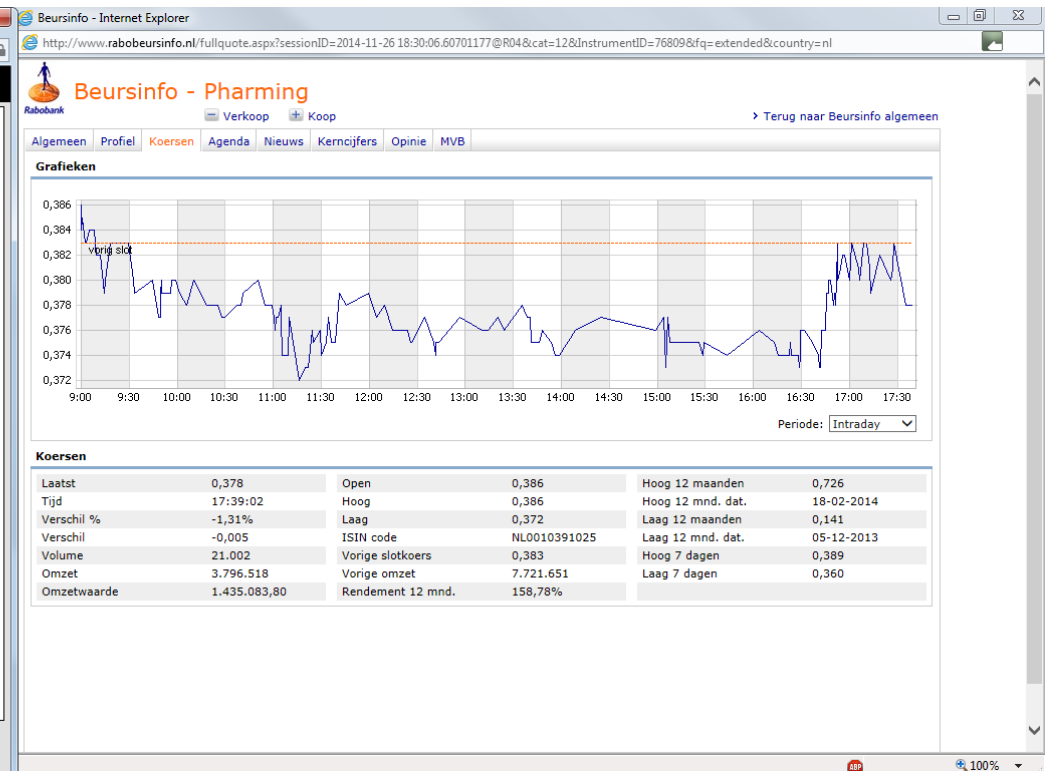
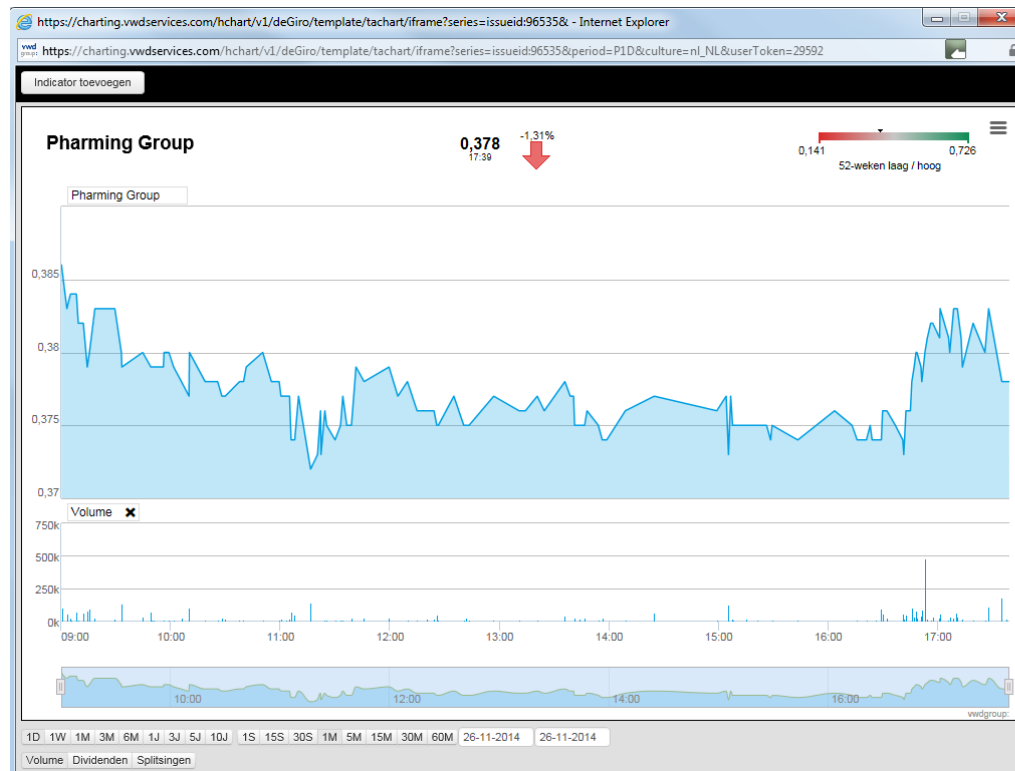
52 Week - -

Turnover €1.436.994,10

Transactions 470

Market Cap 154M€

Euronext Amsterdam ISIN NL0010391025



Di 25 nov 2014

PHARMING GROUP 25/11/2014 17:38 CET

PHARM €0,383 CLOSED

Since Previous Close +0,014 (+3,79%)

Since Open +0,014 (+3,79%)

Volume 7.721.651 [17:38]

Previous Close €0,369 [24/11/2014]

Open €0,369

52 Week - -

Turnover €2.941.890,75

Transactions 714

Market Cap 156M€

Euronext Amsterdam ISIN NL0010391025

Dinsdag 25 november. Er werd een pump uitgevoerd.

Highlighted in de linker grafiek een bijzondere trade die aan de pump vooraf ging.

Werd hier getest wat de koopbereidheid was?

Of was hier een partij teleurgesteld en loosde de stukken, onwetend wat er komen ging?



Ma 24 nov 2014

PHARMING GROUP 24/11/2014 17:35 CET

PHARM €0,369 CLOSED

Since Previous Close +0,002 (+0,54%)

Since Open +0,001 (+0,27%)

Volume 2.105.956 [17:35]

Previous Close €0,367 [21/11/2014]

Open €0,368

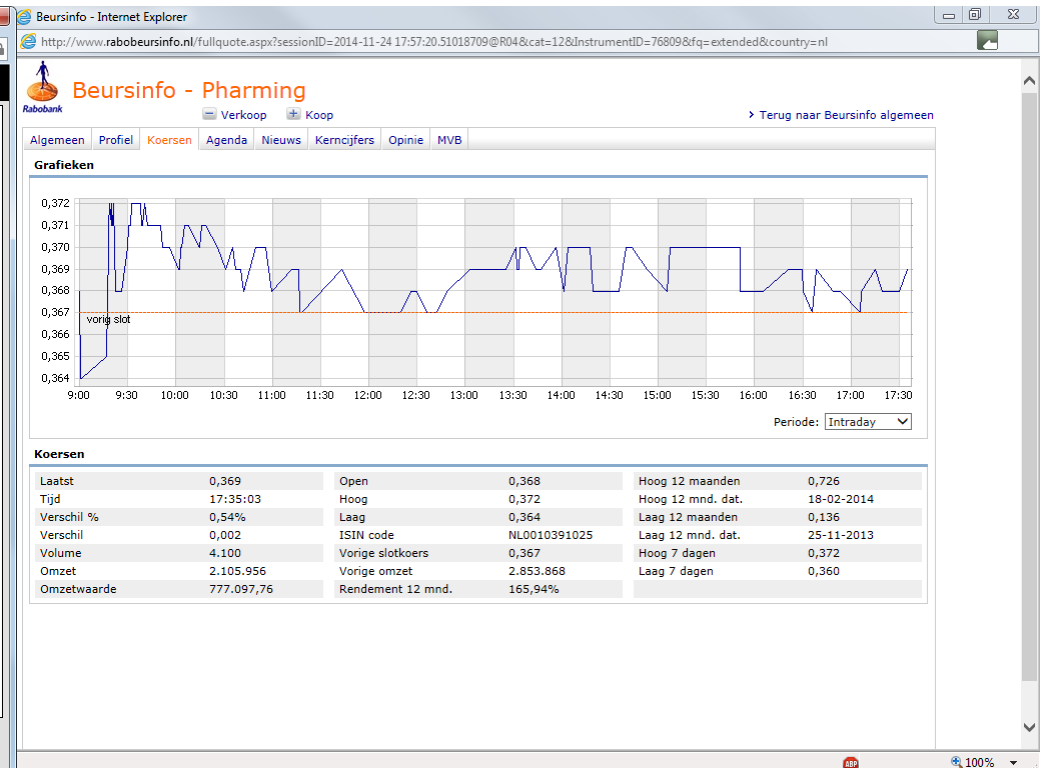
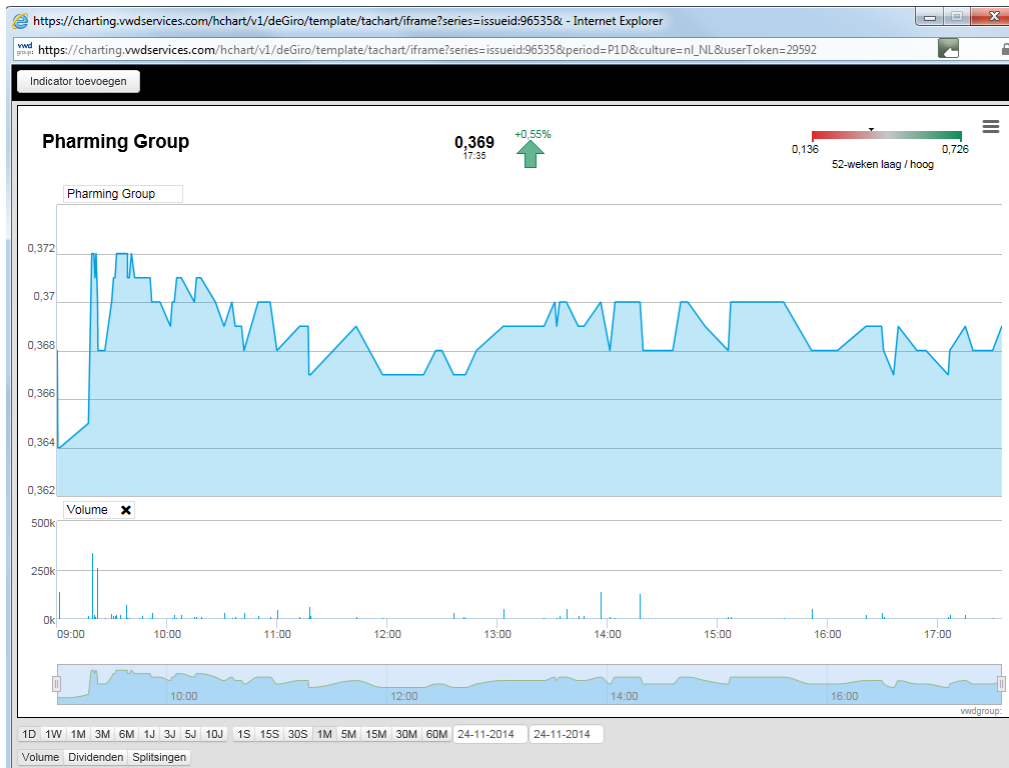
52 Week - -

Turnover €777.613,46

Transactions 245

Market Cap 150M€

Euronext Amsterdam ISIN NL0010391025



Vr 21 nov 2014

PHARMING GROUP 21/11/2014 17:35 CET

PHARM €0,367 CLOSED

Since Previous Close +0,004 (+1,10%)

Since Open +0,002 (+0,55%)

Volume 2.853.868 [17:35]

Previous Close €0,363 [20/11/2014]

Open €0,365

52 Week - -

Turnover €1.040.616,53

Transactions 383

Market Cap 149M€

Euronext Amsterdam ISIN NL0010391025

